

## Slide 1: The Wanneroo Labour Market



Australian Government  
Department of Employment

# The Wanneroo labour market

## Challenges and opportunities

Ivan Neville

Branch Manager, Labour Market Research and Analysis  
Department of Employment

[www.employment.gov.au](http://www.employment.gov.au)

## Slide 2: Wanneroo resident profile

### Wanneroo resident profile

	Wanneroo LGA	WA
Adult population growth (2011 to 2016)	26%	11%
Unemployment rate	8.4%	5.7%
Year 12 attainment (25-34 years, 2016)	70%	74%
Born in 'OTMESC' (15+ years)	22%	21%

Source: ABS Census of population and housing, 2011 and 2016; Department of Employment, Small Area Labour Markets, June Quarter 2017; ABS Labour Force, September 2017 (Seasonally adjusted data)

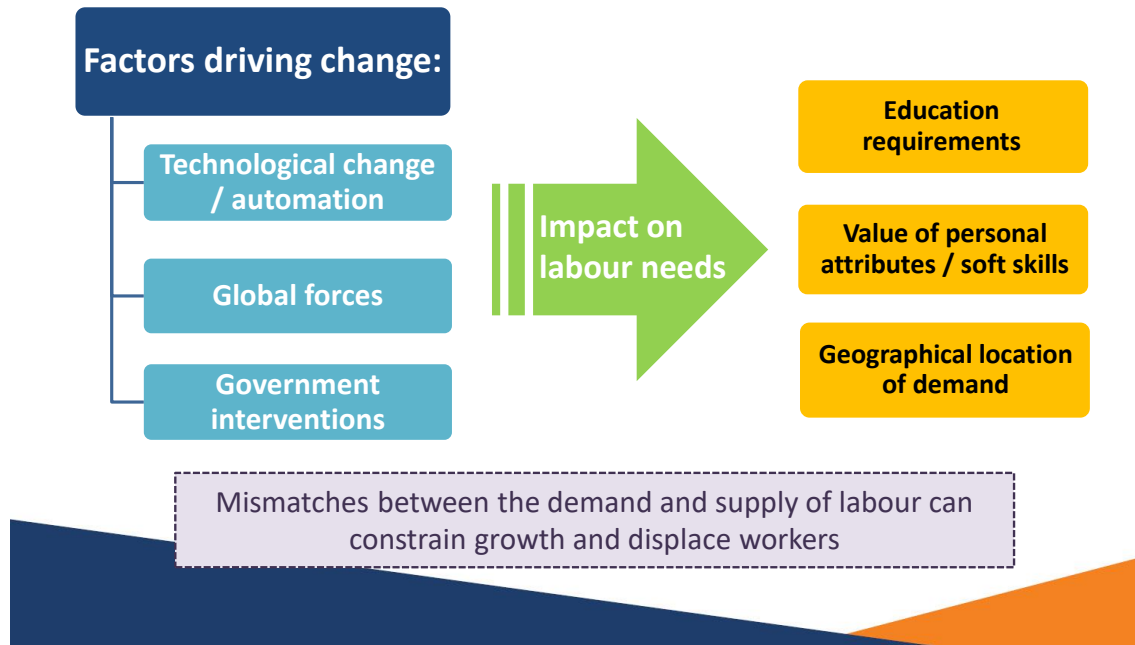
#### **Wanneroo resident profile**

Source: ABS Census of population and housing, 2011 and 2016; Department of Employment, Small Area Labour Markets, June Quarter 2017; ABS Labour Force, September 2017 (Seasonally adjusted data)

	Wanneroo LGA	WA
Adult population growth (2011 to 2016)	26%	11%
Unemployment rate	8.4%	5.7%
Year 12 attainment (25-34 years, 2016)	70%	74%
Born in 'OTMESC' (15+ years)	22%	21%

### Slide 3: The jobs market is constantly being disrupted

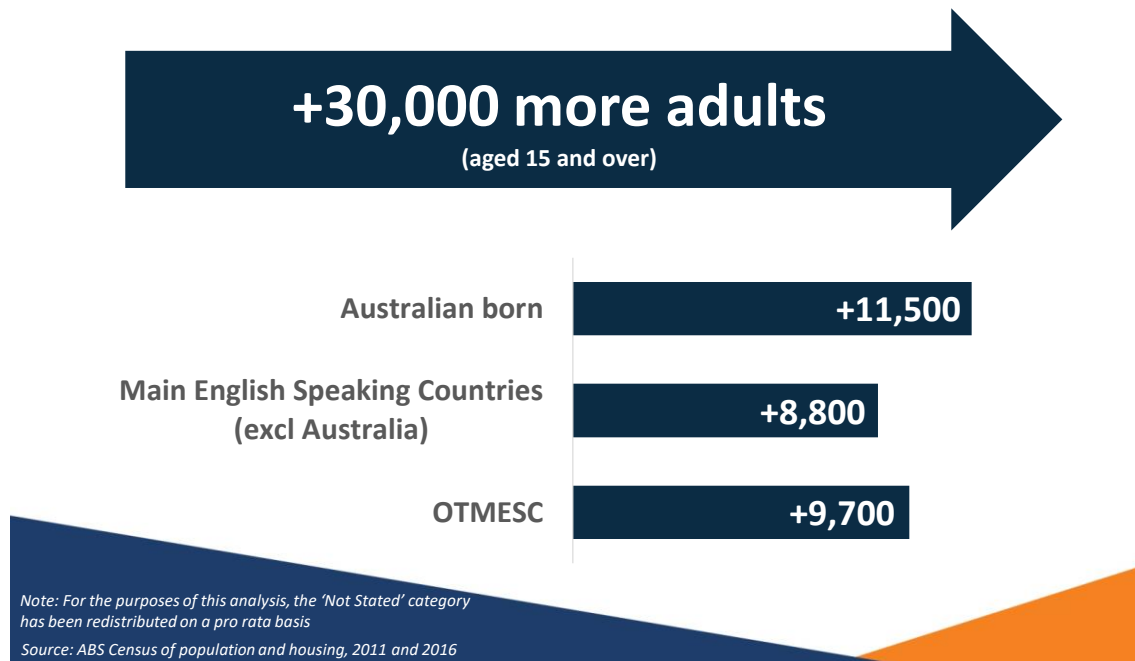
## The jobs market is constantly being disrupted



**The jobs market is constantly being disrupted**

## Slide 4: Census 2016: How have things changed in Wanneroo?

### Census 2016: How have things changed in Wanneroo?

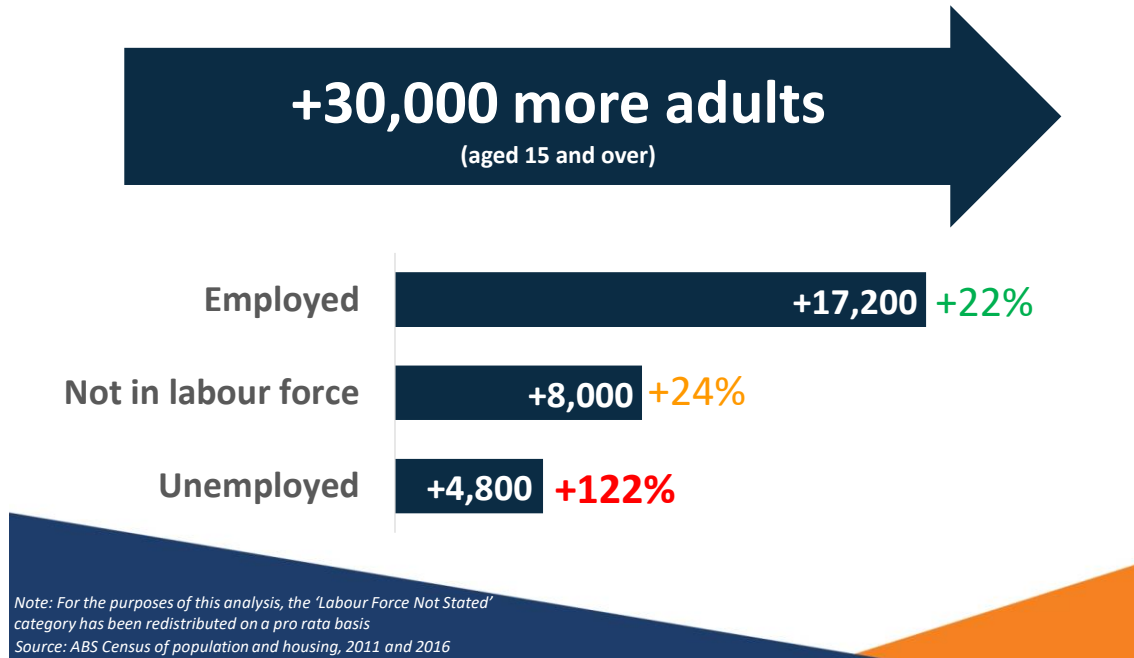


#### Census 2016: How have things changed in Wanneroo?

Source: ABS Census of population and housing, 2011 and 2016

## Slide 5: Census 2016: How have things changed in Wanneroo?

### Census 2016: How have things changed in Wanneroo?



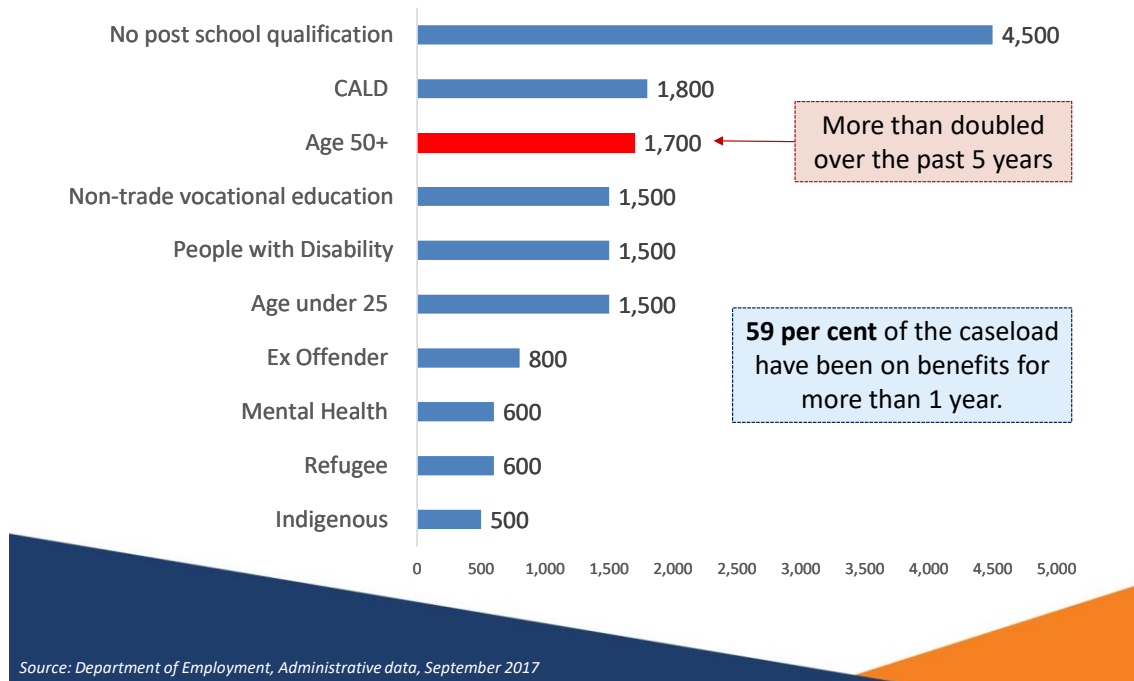
### Census 2016: How have things changed in Wanneroo?

Source: ABS Census of population and housing, 2011 and 2016

## Slide 6: Who has been missing out?

### Who has been missing out?

The jobactive caseload in Wanneroo, September 2017



### Who has been missing out?

Source: Department of Employment, Administrative data, September 2017

## Slide 7: There has been a shift to the services sector

### There has been a shift to the services sector

Change 2011 to 2016, Wanneroo LGA



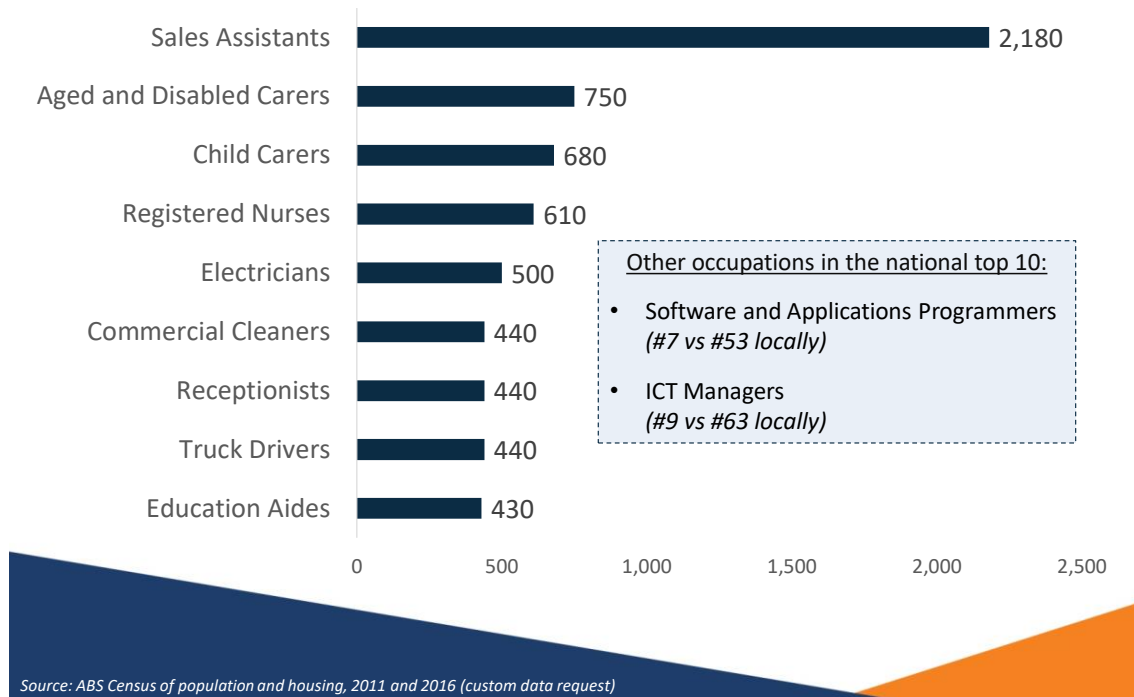
### There has been a shift to the services sector

Source: ABS Census of population and housing, 2011 and 2016

## Slide 8: Occupations with the highest employment growth

### Occupations with the highest employment growth

Change 2011 to 2016, Pearce and Cowan Electorates



### Occupations with the highest employment growth

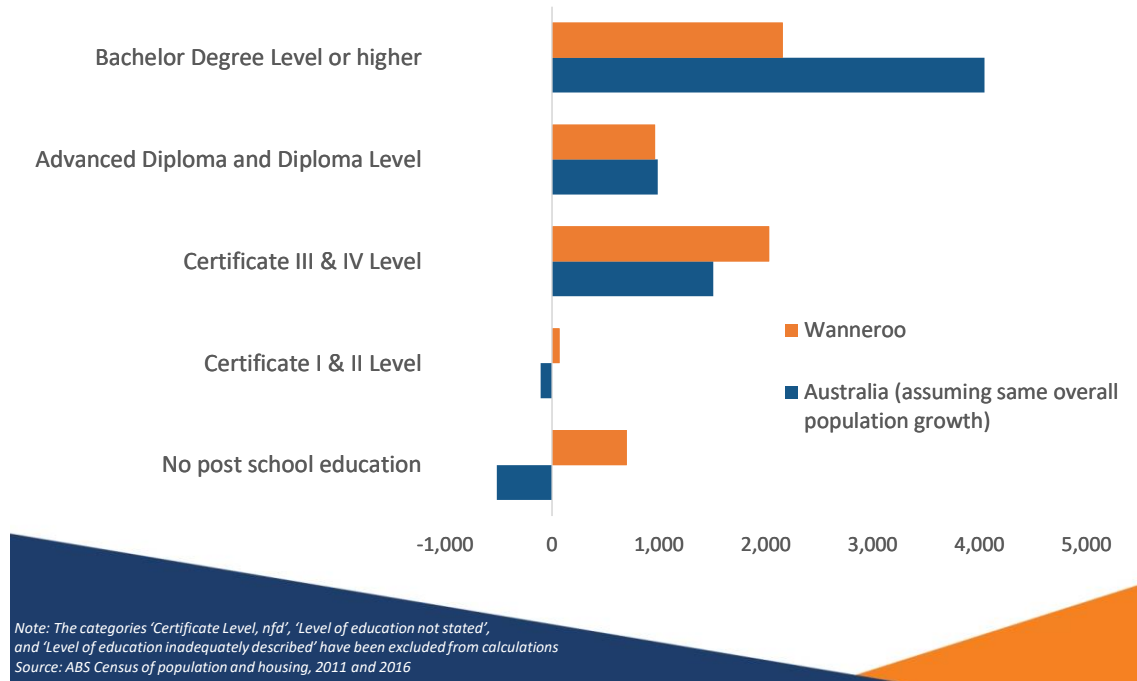
Source: ABS Census of population and housing, 2011 and 2016 (custom data request)



## Slide 9: Change in education attainment levels

### Change in education attainment levels

Change 2011 to 2016, Wanneroo LGA, 25-34 year olds



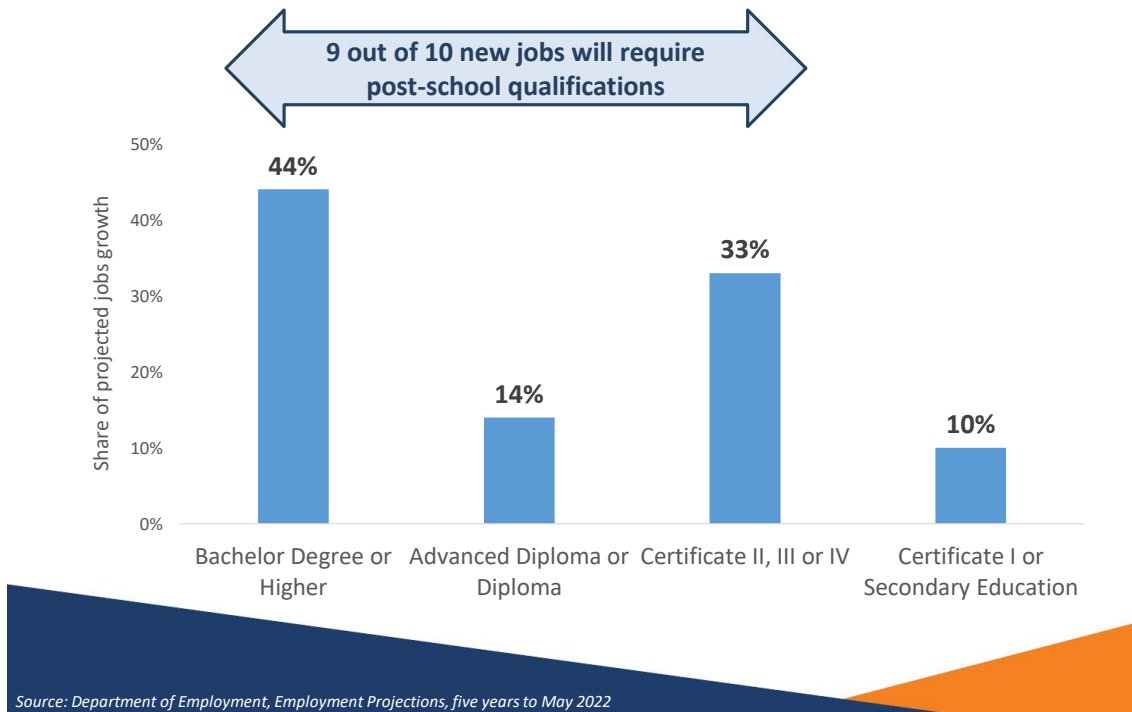
### Change in education attainment levels

Source: ABS Census of population and housing, 2011 and 2016

## Slide 10: The need for post-school education is increasing

### The need for post-school education is increasing

Share of projected jobs growth by education requirement, five years to May 2022, Australia



### The need for post-school education is increasing

Source: Department of Employment, Employment Projections, five years to May 2022

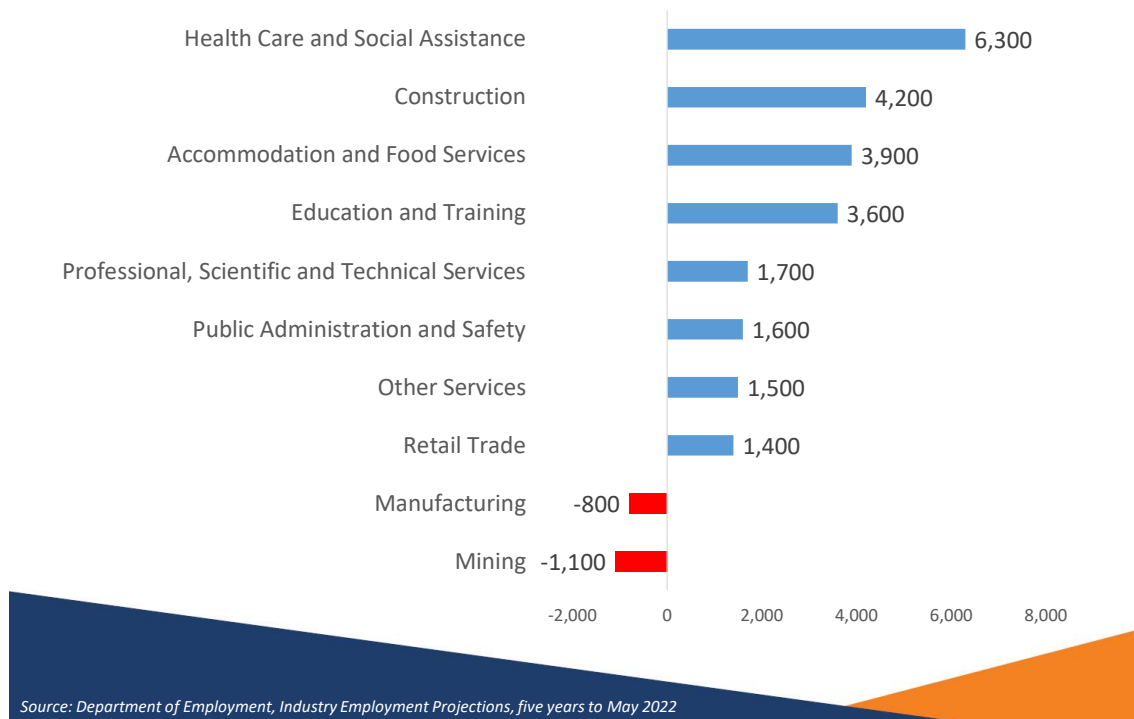
Education requirement	Share of projected jobs growth
Bachelor Degree or Higher	44%
Advanced Diploma or Diploma	14%
Certificate II, III or IV.	33%
Certificate I or Secondary Education	10%

Note: 9 out of 10 new jobs will require post-school qualifications

## Slide 11: The shift to the services sector will continue

### The shift to the services sector will continue

Perth – North West, projections to 2022



### The shift to the services sector will continue

Source: Department of Employment, Industry Employment Projections, five years to May 2022

## Slide 12: Conclusion

# Conclusion

### **Wanneroo is undergoing a period of significant change**

- Strong population growth (many born overseas, OTMESC increasing)
- Shift to the services sector
- Shift to higher skilled jobs

### **The local workforce must keep pace with evolving demands**

- Most new jobs require post school qualifications
- ICT skills becoming increasingly important
- Employability skills (such as communication skills)

### **A growing number of people are being left behind**

- Those with lower levels of education
- Older job seekers
- Long-term unemployed

Future planning should aim to harness the local labour supply, while maintaining realistic expectations about the pace of skills development

## Slide 13: Australian Government Department of Employment



**Australian Government**  
**Department of Employment**

